



TECHNICAL INFORMATION  
VETERINARY PRODUCTS

**CLEMASTINE**®  
**CLEMASTINE TABLETS OF 1 mg**

## CLEMASTINE

Registration number Q-0666-047

### FORMULA:

Each tablet contains:

Clemastine Fumarate, equivalent to ..... 1 mg Clemastine

Excipients c.b.p..... 1 tablet

### THERAPEUTIC INDICATIONS:

Clemastine is an antihistamine indicated for the control of certain allergic reactions and conditions in cats and dogs for the treatment of pruritus, urticaria, atopic dermatitis and insect bites, which can be administered for prolonged periods.

### PHARMACOLOGY :

Clemastine is a competitive antihistamine antagonist of H1 receptors and belongs to the group of ethanolamines, the same chemical group as diphenhydramine, like other traditional H1, its anticholinergic, antidopaminergic and antiserotonergic effects are similar.

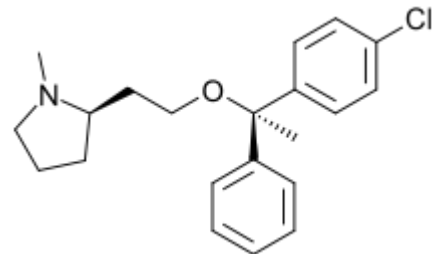
It can be administered for prolonged periods, effectively combats the vast majority of types of allergies that cause itching in dogs and cats, which can sometimes become extremely severe and even cause mutilation. It is the antihistamine that works best to reduce and inhibit itching in dogs more than any other antihistamine. It neutralizes urticaria, blisters and other types of edema formation in response to injury, antigens, allergens or histamine releasing drugs.


It competitively antagonizes histamine receptors on H1 receptors in the gastrointestinal tract, uterus, large blood vessels and bronchial smooth muscle. Receptor blockade also suppresses edema formation, rash and pruritus resulting from histamine activation.

It has anticholinergic properties due to its central antimuscarinic effect, causing a slight sedation not as deep as other antihistamines.

### PHARMACOKINETICS:

After oral administration, bioavailability is only 3%. When administered intravenously, it increases, in spite of this the effect on histamine pruritus is good, only a dose of 0.05 to 0.1 mg/kg twice a day is recommended, although a study concluded that the most effective dose in dogs via oral administration is up to 1 mg/kg of weight, in another study it was demonstrated that if it is also supplemented with fatty acids the effect improves more.



	<b>TECHNICAL INFORMATION VETERINARY PRODUCTS</b>
	<b>CLEMASTINE<sup>®</sup> CLEMASTINE TABLETS OF 1 mg</b>

In the case of cats, clemastine is more bioavailable, so the recommended dose is 0.35 to 0.68 mg/cat twice a day.

**CONTRAINDICATIONS:**

Do not use in pregnant and lactating animals (may decrease milk production); Avoid concomitant use with steroids, androgens, progesterone and hydrocortisone. Do not administer with tranquilizers, narcotics or anesthesia potentiators as it is produced by CNS depressant effect. Do not administer in patients with bladder obstruction or liver damage.

**GENERAL PRECAUTIONS:** Overdoses (in cats more than 0.1mg/cat, in dogs more than 1.5mg/kg) may cause irritability, convulsions, hyperthermia, intestinal disorders such as anorexia, nausea, vomiting or diarrhea. These effects can be observed only when administered orally for a long period of time.

**WARNINGS** Adverse effects may include transient drowsiness that occurs relatively frequently, manifested by ataxia and drowsiness and others such as sedation, urinary frequency, difficulty urinating, and urinary retention.

**Use in:** Domestic canines and felines

**ROUTE OF ADMINISTRATION:** Oral.

**DOSAGE:**

Domestic Canines 0.05 - 0.1 mg/kg body weight every 12 hours.

Size	kg of weight	tablets per dog
Small	5 to 10	½ - 1
Medium	10 to 20	1 - 2
Large	20 to 30	2 - 3
	30 to 40	3 - 4
Gigant	50 to 60	5 - 6

Domestic Felines 0.68 mg/cat

The treatment is recommended for 7 days according to the clinical case and criteria of the Veterinary Doctor.

**PRESENTATION:** Box with blister pack of 20 tablets.



**TECHNICAL INFORMATION  
VETERINARY PRODUCTS**

**CLEMASTINE<sup>®</sup>  
CLEMASTINE TABLETS OF 1 mg**

**STORAGE RECOMMENDATIONS:**

Store in a cool dry place at not more than 25 °C.

**PROTECTION LEGENDS:**

Consult the Veterinary Doctor.

Keep out of reach of children.

**PRODUCT FOR EXCLUSIVE USE IN VETERINARY MEDICINE.**

**GLP**

**MADE IN MEXICO BY:**

**INNOPHARMA, S. DE R. L. DE C.V.**

Av. Calzada de las Armas No.114

Fraccionamiento Industrial las Armas, CP.54080

Tlalnepantla de Baz, Estado de México

Tel: (01 55) 2626 9100 ext. 148

01800 522 1217

ventas@innopharma.com.mx

**www.innopharma.com.mx**