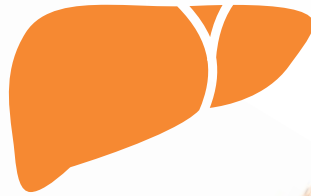


NEW

# BeSame

they care your dog  
and cat's liver



*Complementary feed  
for dogs and cats.*

 **Candioli**  
PHARMA

# The liver is a key organ<sup>13</sup>

## METABOLISM

Proteins, lipids, carbohydrates, vitamins and hormones

## DIGESTION

Bile, absorption of lipids and fat-soluble vitamins

## DEPOSIT

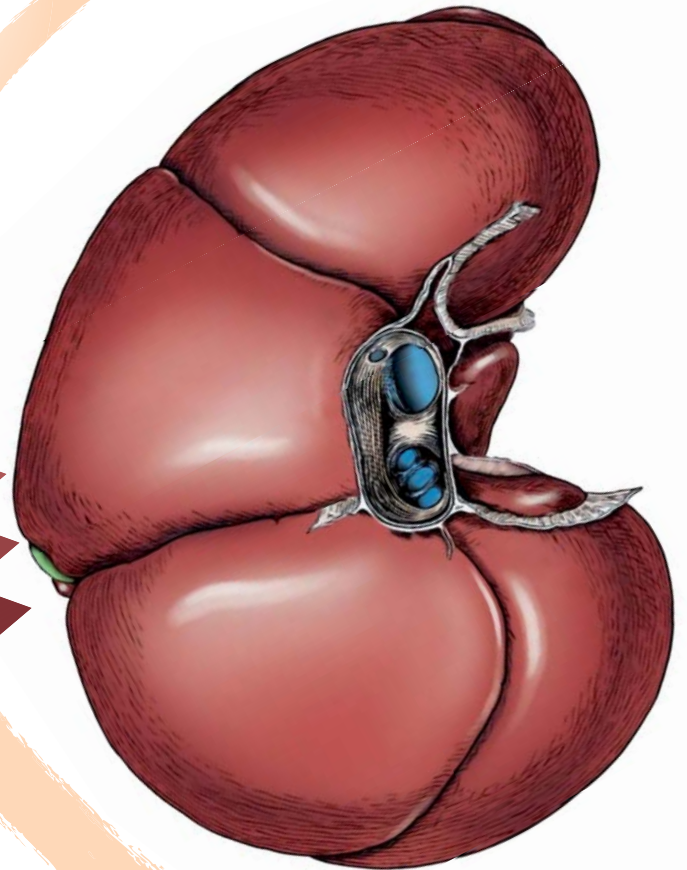
Vitamins, glycogen, lipids, copper, iron and zinc

## ANTIOXIDANT DEFENCE

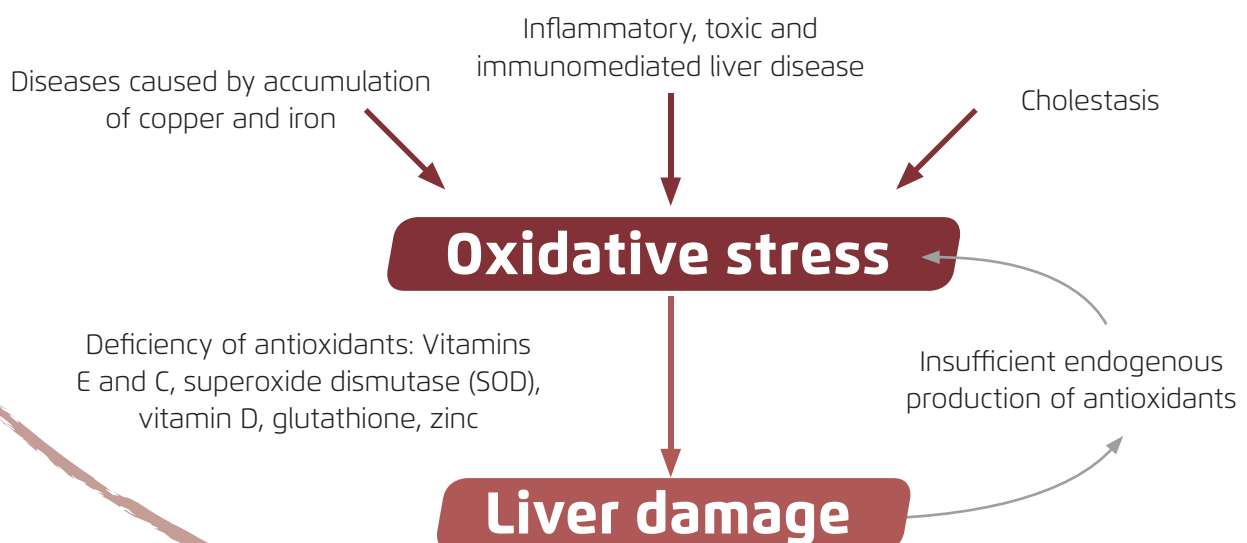
Free radicals and toxins

## DETOXIFICATION / EXCRETION

Ammonia, medicines and toxic substances



## OXIDATIVE DAMAGE IS THE CENTRAL MECHANISM IN MOST ACQUIRED FORMS OF LIVER DISEASE<sup>1,3,4,6,17,18,19,20,25</sup>

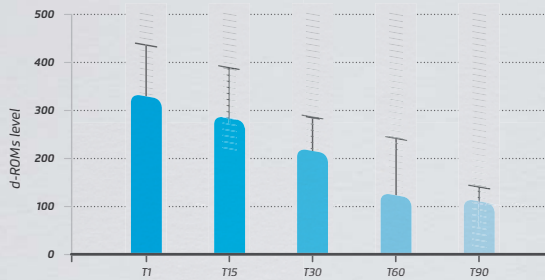


## Hepatoprotective and antioxidant function of fermented methionine and Silybum marianum in feline inflammatory liver disease

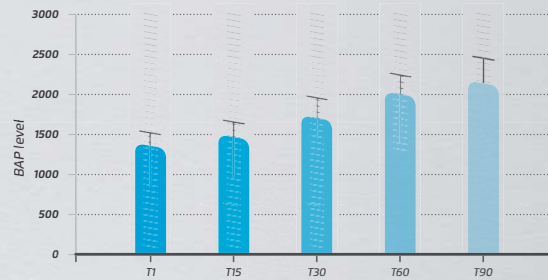
Tiziana Cocca<sup>1</sup>, Elena Biasibetti<sup>2</sup>, Mauro Bigliati<sup>3</sup>, Silvia Mioletti<sup>2</sup>, Maria Teresa Capucchio<sup>2</sup>, Natascia Bruni<sup>3</sup>

<sup>1</sup>Napolivet Veterinary Clinic, Naples, Italy - <sup>2</sup>University of Turin, Department of Veterinary Science, Italy - <sup>3</sup>Istituto Farmaceutico Candioli S.p.A., Beinasco (Turin), Italy

d-ROMs test

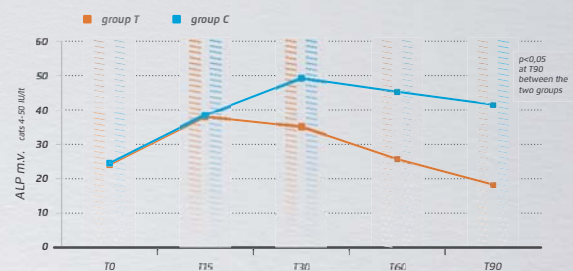
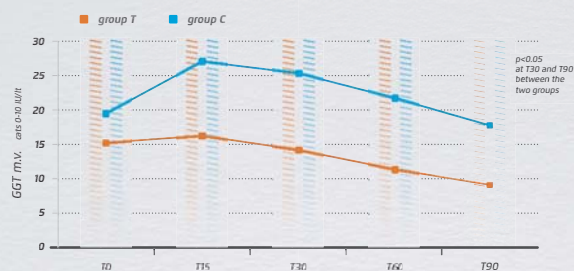
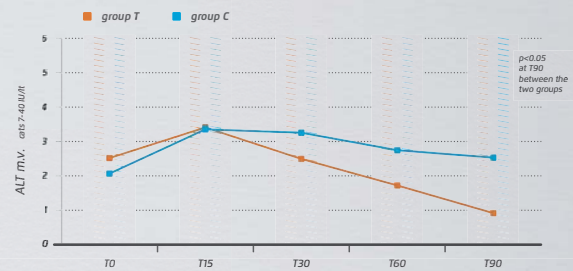
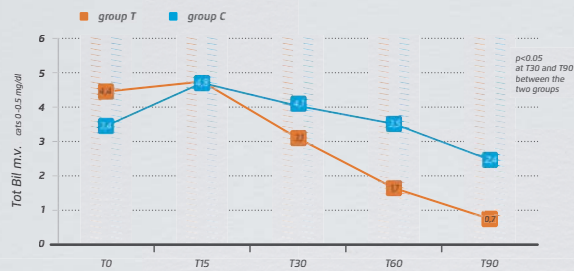


BAP test



### OXIDATIVE STRESS

Effect of administration of **BeSame** (90 days) on oxidative stress markers in cats affected by cholangitis/cholangio-hepatitis (average values on 10 cats) ( $p < 0.05$  between T0 and T90)



### LIVER FUNCTION

Effect of administration of **BeSame** (90 days) compared to the control group on the main liver function parameters in cats with cholangitis/cholangio-hepatitis (average values of 10 cats per each group)

### MAIN FINDINGS

- ✓ Effective on oxidative stress
- ✓ Progressive improvement of the main plasma parameters of the liver function
- ✓ Rapid improvement of general conditions, BCS and BW
- ✓ No adverse effect
- ✓ Ease of administration



THE NEW TOOL  
FOR MAINTAINING  
PROPER ANTIOXIDANT  
LIVER FUNCTION

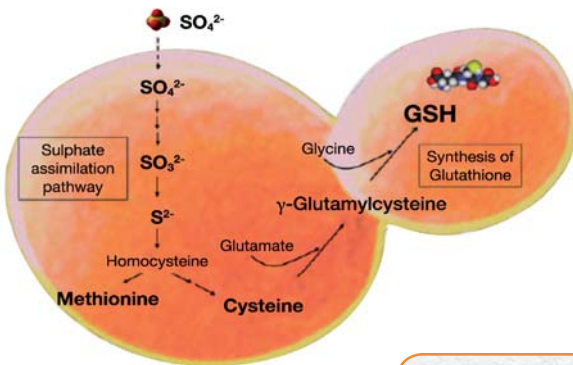


It is a natural product, derived from yeast fermentation (*Saccharomyces cerevisiae*), with a high content of natural antioxidants, able to provide

### NATURAL ANTIOXIDANT MIX

to maintain antioxidant defences

- ✓ **Glutathione**<sup>14,16</sup> (Liu H et al 2002, Lin JP et al 2004, Wen S et al 2004)
- ✓ **SAMe** (*S*-Adenosylmethionine)<sup>9,10,26,27</sup>
- ✓ **Polyamines**



### DID YOU KNOW THAT...

The benefits of taking yeast fermentation derivatives and lactobacilli have been known for millennia.

"The processes required to obtain fermented foods were already present on Earth when man appeared on the scene... When we study these foods, we are actually studying the most intimate relationship between man, microorganisms and food"

Prof. KH Steinkraus. Cornell University 1993

Fermentative derivatives are increasingly used in the field of therapy as well for their bioavailability and effectiveness (Galanie S et al, 2015; Wang XL et al, 2016; Filannino P et al, 2016)

## Why choose the protection of fermented derivatives?

### 1 INCREASED BIOAVAILABILITY

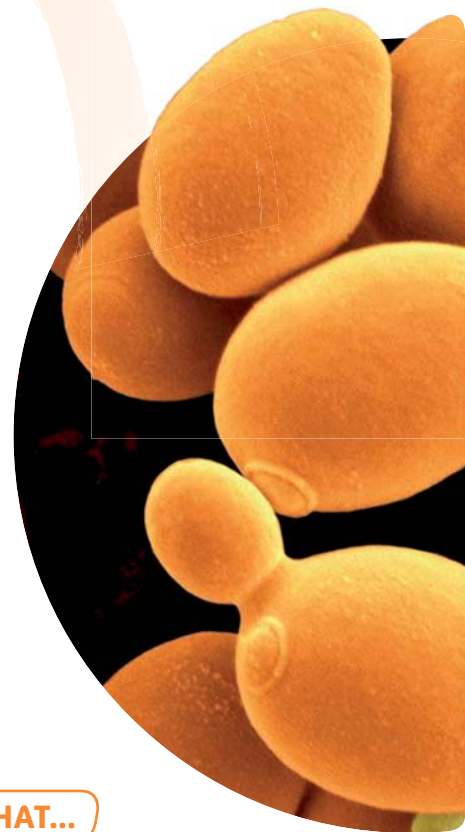
The levels of plasma (Jensen et al 2011 GS, Mischoulou J et al 2012), intestinal (Muratti, 2011) and liver (Lai J et al 2009) antioxidants increase after oral administration of the fermentative derivatives of *Saccharomyces cerevisiae*.

### 2 GUARANTEED STABILITY

The protection provided by yeast cells induces high stability against environmental humidity, which is the main culprit for antioxidants degradation (data on file).

### 3 RESISTANCE TO DIFFERENT PH VALUES

Gastric acidity and digestive processes do not alter the activity of the natural antioxidants derived from the fermentation of *Saccharomyces cerevisiae* (Jensen GS et al 2011, Mischoulou J et al 2012, Lai J et al 2009).





**SILYBIN AND PHOSPHATIDYLCHOLINE**  
**THE PATENTED PHYTOSOMISATION TECHNOLOGY**  
**FOR MAXIMUM BIOAVAILABILITY AND EFFICACY**



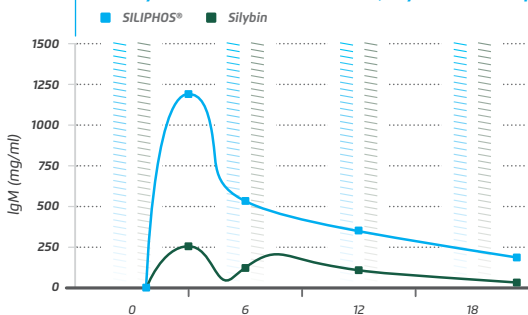
the **most effective** silymarin component on liver cell function<sup>2,7,12</sup>

the main phospholipid component of cell membranes:

- ✓ lymphatic **anti-fibrotic activity**<sup>7,8</sup>;
- ✓ **increases** the intestinal absorption of active substances<sup>7,8</sup>;
- ✓ **increases the penetration** within hepatocytes of the active substances<sup>7,8,11</sup>.

The use of **SILIPHOS®** provides a bioavailability of silybin **4 times higher** than the silybin contained in the 80% standardised dry extract<sup>7</sup>.

*Silybin plasma levels in dogs after oral administration of Silybin versus SILIPHOS® (Silybin + Phosphatidylcholine)*



Filbum CR, Kettenacker R, Griffin DW. Bioavailability of a silybinphosphatidylcholine complex in dogs J Vet Pharmacol Therap 2007



Thanks to the patented SILIPHOS® technology which makes it possible to obtain **significantly greater** biliary excretion and plasma levels than those obtainable with silybin from *Silybum marianum* extract<sup>7,8,11,12</sup>.

## Why choose the effectiveness of phytosomised derivatives?

### PROVEN ACTIVITIES OF SILYBIN IN DOGS AND CATS

- ✓ **Direct antioxidant** (free radical scavenger)<sup>3,13,17,19</sup>
- ✓ **Indirect antioxidant** (stimulates the production of glutathione)<sup>3,8,13,17,19,23</sup>
- ✓ **Promotes** the protein synthesis (cellular replication) > antifibrotic action<sup>3,13,17</sup>
- ✓ **Inhibits** the leukotriene production > anti-inflammatory action<sup>3,13,15</sup>
- ✓ **Choleretic** and cholagogue<sup>8,17</sup>
- ✓ **Inhibits** the adhesion of hepatotoxins<sup>3,17</sup>
- ✓ **Decreases** transaminase levels and improves prothrombin times<sup>8</sup>
- ✓ **Synergy** with vitamin E and phosphatidylcholine<sup>3,8,17</sup>



# BeSame

Complementary feed for dogs and cats

## COMPOSITION

Yeast products (Products obtained from the biomass of specific microorganisms cultivated on certain substrates), Yeasts, Mono and diglycerides of fatty acids (Glyceryl dibehenate), Phosphatidylcholine (\*Siliphos®), Magnesium stearate, Sodium pyrophosphate, Lupin protein flour, Sunflower Oil, liquid wheat starch, Raw glycerol, Kerria Lacca extract

## ADDITIVES PER KG

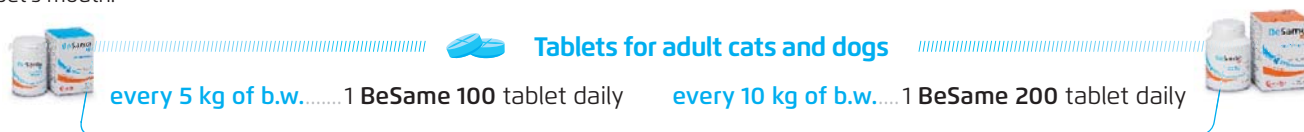
**BeSame 100** Emulsifiers and stabilising agents: Microcrystalline cellulose E460 84,800 mg Vitamins, provitamins and chemically well-defined substances with a similar effect: Vitamin E 3a700 UI 81,923 Organoleptic additives: Silybum marianum (L.) Gaertn. = Carduus marianus L.: Milk thistle extract CoE 551. 18,462 mg (\* Siliphos®) Anti-caking agents: Colloidal Silica E551b 13,185 mg Trace elements: Iron oxide E1 143 mg Other colourings: Titanium Dioxide E 171 524 mg

**BeSame 200** Vitamins, pro-vitamins and substances with chemically well-defined similar effect: Vitamin E 3a700 UI 50,714 Organoleptic additives: Silybum marianum (L.) Gaertn. = Carduus marianus L.: Milk thistle extract CoE 551. 22,857 mg (\* Siliphos®) Anti-caking agents: Colloidal Silica E551b 14,286 mg Trace elements: Iron oxide E1 143 mg Other colourings: Titanium Dioxide E 171 524 mg

## INSTRUCTIONS FOR PROPER USE

Siliphos® is an innovative patented complex that combines the well-known Silybin properties with the action of phosphatidylcholine, which promotes its faster and more complete intestinal absorption, up to four times compared with normal silybin. Silybin is one of the most active components of Silybum marianum extract (silymarin) in promoting proper liver function. The fermentative derivatives (OXOMET) contained in BeSame 100/200 tablets provide a suitable amount of substances able to normalise and maintain antioxidant and detoxifying liver defences, thereby exerting beneficial effects on the pet.

Administer BeSame 100/200 tablets for a minimum of 30 days, according to the following diagram, mixed with food or directly into the pet's mouth:



It is recommended to split the daily dosage into two administrations, one in the morning and one in the evening. It is recommended to seek the advice of a Veterinarian before use or before extending the period of administration. Plenty of water should be available at all times.

Siliphos® is a trademark registered by indena

## Bibliography

- AA.VV. Liver disease in dogs and cats. A roundtable discussion. *Veterinary Forum* 2005;22(SA) suppl
- Bosio E, et al. Effects of the flavolignans of Silybum marianum on lipid peroxidation in rat liver microsomes and freshly isolated hepatocytes. *Pharmacol Research* 1992;25:147-154
- Center SA. Antioxidant in liver disease: a focus on thiol supplementation. *WSAVA 2006 World Congress Proceedings*:423-426
- Center SA. Standard care in chronic hepatitis. *WSAVA 2006 World Congress Proceedings*: 43-49
- Center SA. S-Adenosylmethionine (SAME) an antioxidant and anti-inflammatory nutraceutical. *18th ACVIM 2000 Congress Proceedings*
- Center SA, et al. Liver glutathione concentrations in dogs with naturally occurring liver disease. *Am J Vet Res* 2002;63:1187-1197
- Filburn CR, et al. Bioavailability of a silybin-phosphatidylcholine complex in dogs. *J Vet Pharmacol Ther* 2007;30:132-138
- Kidd PM, et al. A review of the bioavailability and clinical efficacy of milk thistle phytosome: a silybin-phosphatidylcholine complex (Siliphos). *Altern Med Rev* 2005;10(3):193-203
- Hayakawa H, et al. Metabolome analysis of *Saccharomyces cerevisiae* and optimization of culture medium for S-adenosylmethionine production. *AMB Expr* 2016;6:38
- Huang Y, et al Enhanced S-adenosylmethionine production in *Saccharomyces cerevisiae* by spaceflight culture, overexpressing methionine adenosyltransferase and optimizing cultivation. *Journal Applied Microbiology* 2012;112:683-694
- Indena. Siliphos technical sheet 10/2014
- Luper S. A review of plants used in the treatment of liver disease: part 1. *Altern Med Rev* 1998;3(6):410-421
- Meyer HP, et al. Hepatobiliary disease. In Tatcher CD, Hand MH, Remillard RL. *Small Animal Clinical Nutrition Vth edition 2010 Mark Morris Institute*.
- Pennick MJ. An overview on glutathione in *Saccharomyces cerevisiae* versus non conventional yeasts. *FEMS Yeast Research* 2002;2:295-305
- Scanlan N. Compromised hepatic detoxification in companion animals and its correction via nutritional supplementation and modified fasting. *Altern Med Rev* 2001;6(suppl):24-37
- Tang L et al. Three pathway combination for glutathione biosynthesis in *Saccharomyces cerevisiae*. *Microb Cell Fact* 2015;14:139
- Tweed DC. Therapeutic use of cytoprotective agents in canine and feline hepatobiliary disease. *67th SCIVAC National Congress* 2010:141-148
- Tweed DC. Idiopathic hepatitis and cirrhosis in dogs. *67th SCIVAC National Congress* 2010:135-140
- Tweed DC. The latest update on feline liver disease. *NAVC Conference 2009 Proceedings*:550-552
- Tweed DC. Update on feline hepatobiliary disease. *67th SCIVAC National Congress* 2010:20-126
- Wallace KP, et al. S-Adenosyl-L-methionine (SAME) for the treatment of acetaminophen toxicity in a dog. *J Am Anim Hosp Assoc* 2002;38:246-254
- Webb CB, et al. S-Adenosylmethionine (SAME) in a feline acetaminophen model of oxidative injury. *Journal of Feline Medicine and Surgery* 2003;5:69-75
- Webb CB et al. Assessment of oxidative stress in leukocyte and granulocyte function following oral administration of a silybin-phosphatidylcholine complex in cats. *Am J Vet Res* 2009;70:57-62
- Webster CRL, et al. S-Adenosylmethionine and cAMP confer differential cytoprotection against bile acid-induced apoptosis in canine renal tubular cells and primary rat hepatocytes. *Veterinary Therapeutics* 2002;3(4):474-484
- Willard M. Chronic hepatitis in dogs. Diagnosis and treatment. *WSAVA 2001 Congress Proceedings*
- Yall Y. Biosynthesis of S-adenosylmethionine by *Saccharomyces cerevisiae*. 1962
- Yin Y et al. Optimization of overproducing S-adenosylmethionine *Saccharomyces cerevisiae* S-W55 mutant utilizing unpolished rice from aging paddy by feeding L-methionine. *African Journal of Biotechnology* 2011;10(36):6874-6882